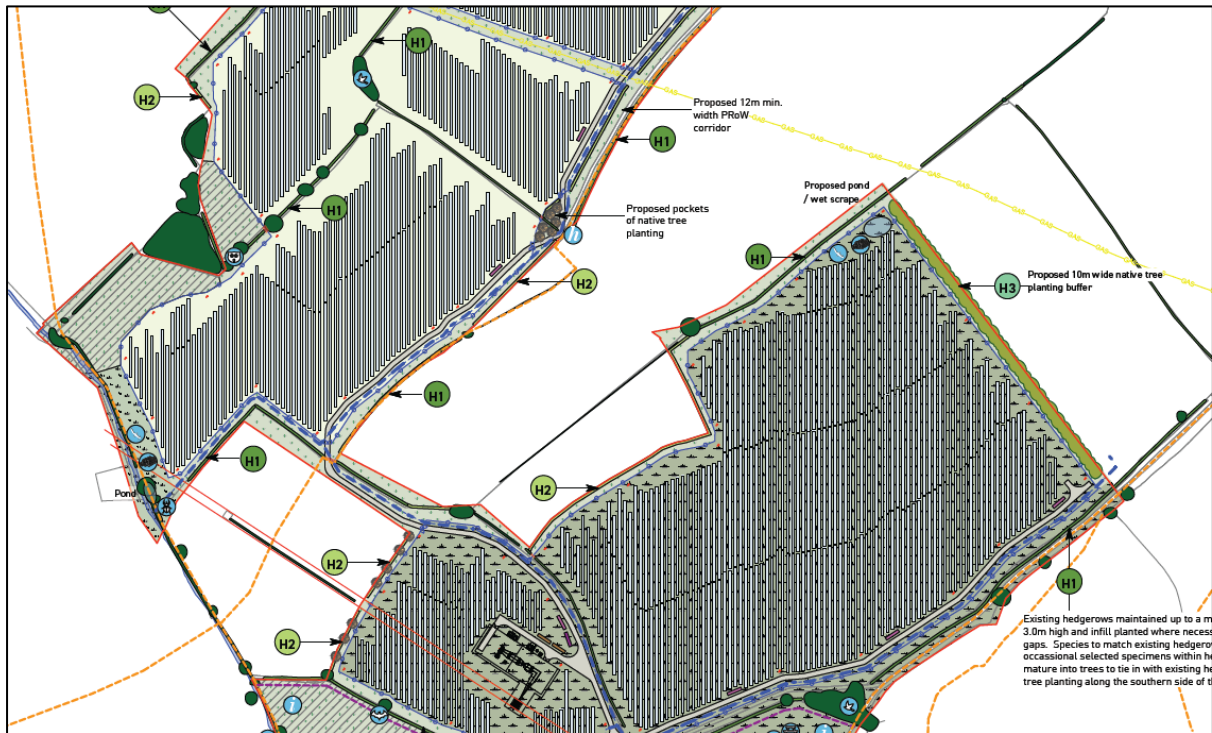


Appendix 2 – Amended Scheme Clarification Note.

- 1.1. **Refused Scheme** – Site Layout and Landscape Strategy, drawing number P19-2022_10 Rev Q, dated 18/08/2022, prepared by Pegasus Group.
- 1.2. **Amended Scheme** – Amended Scheme Site Layout and Landscape Strategy, drawing number P19-2022_24 Rev C, dated 29/02/2024, prepared by Pegasus Group.

Amendment A.

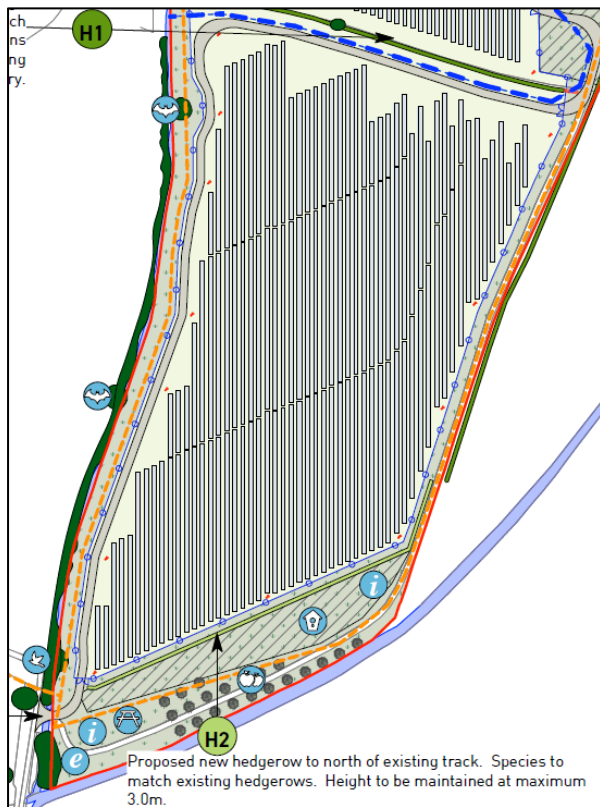


Refused Scheme – The PRoW alignment as per dataset provided by the Council was unrepresentative of the on the ground alignment.



Amendment A – The PRoW alignment has been corrected on the Amended Scheme Plan.

Amendment B.



Refused Scheme - The Arboricultural survey had shown a hedgerow offsite, which is no longer present.

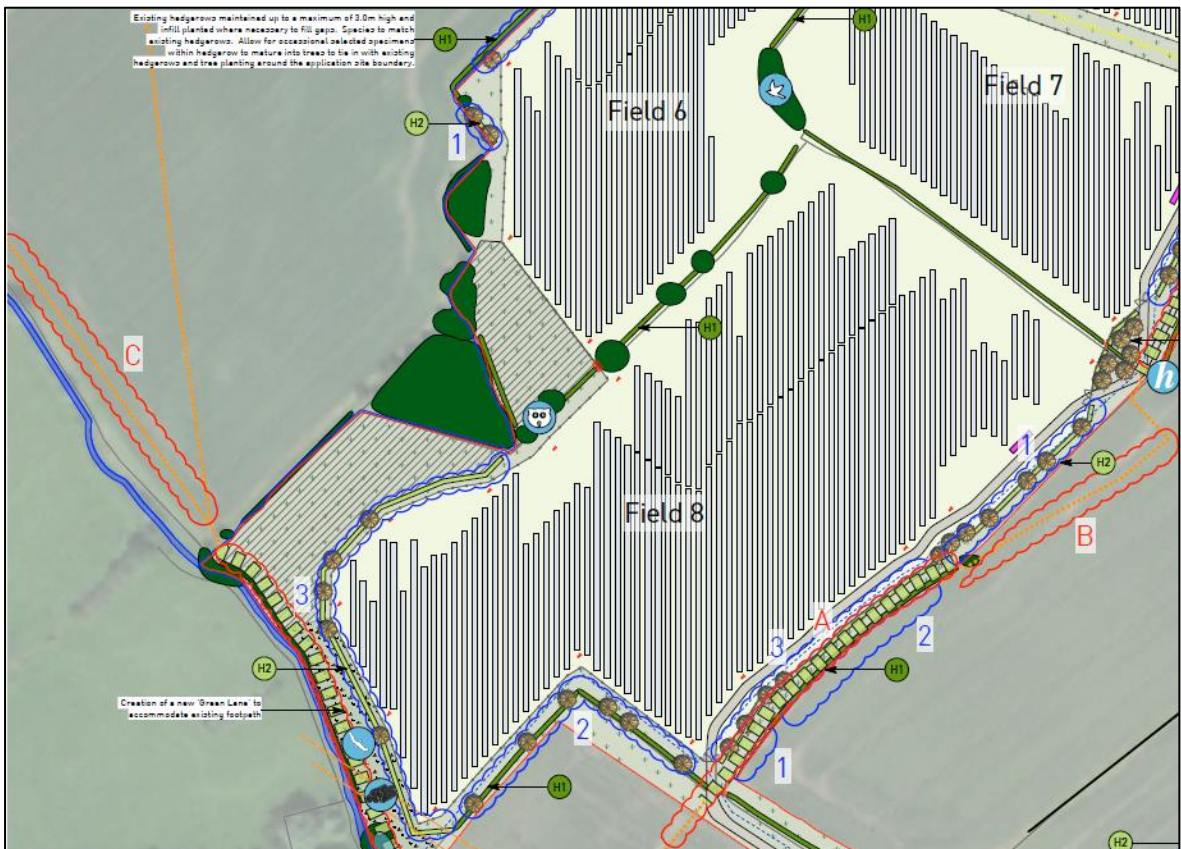


Amendment B - On the Amended Scheme Plan the hedgerow notation has been updated to reflect that this offsite hedgerow is no longer present.

Amendment C.

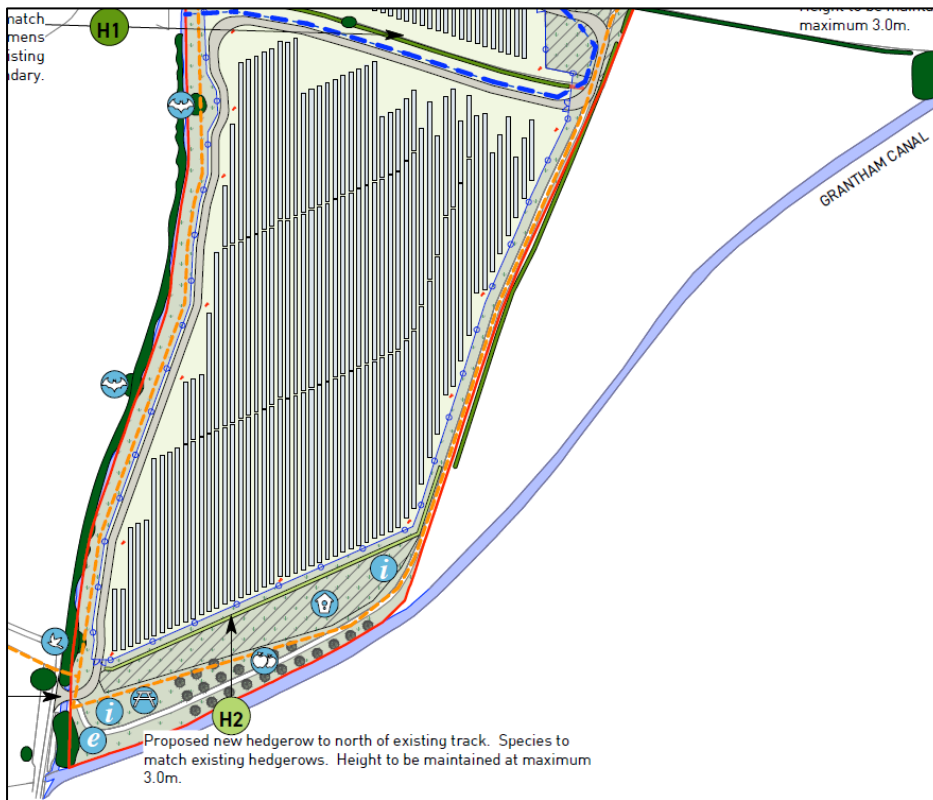


Refused Scheme – This offsite PRoW was not shown on the Refused Scheme.

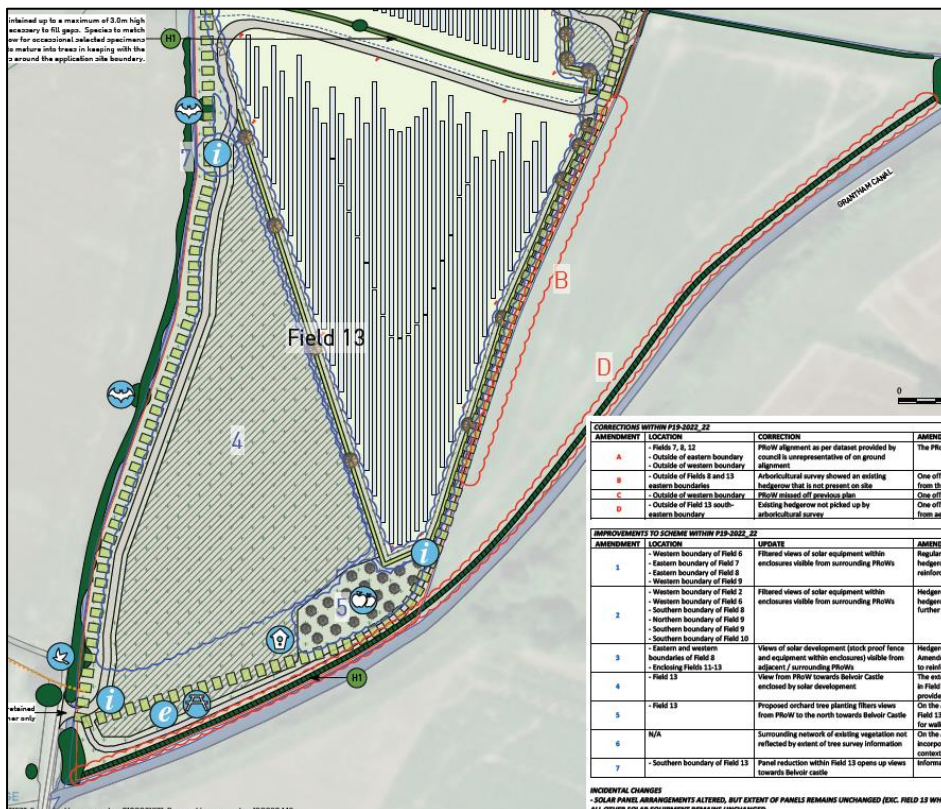


Amendment C – This offsite PRoW has now been shown on the Amended Scheme Plan.

Amendment D.



Refused Scheme – The existing offsite hedgerow to the north of the canal was not shown.

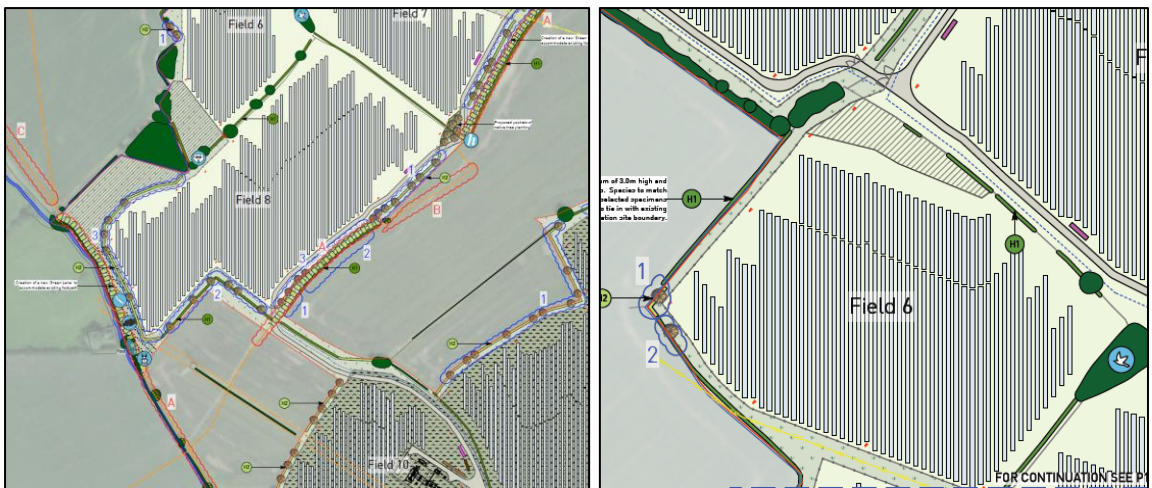


Amendment D – The existing offsite hedgerow to the north of the canal has now been shown on the Amended Scheme Plan.

Amendment 1.

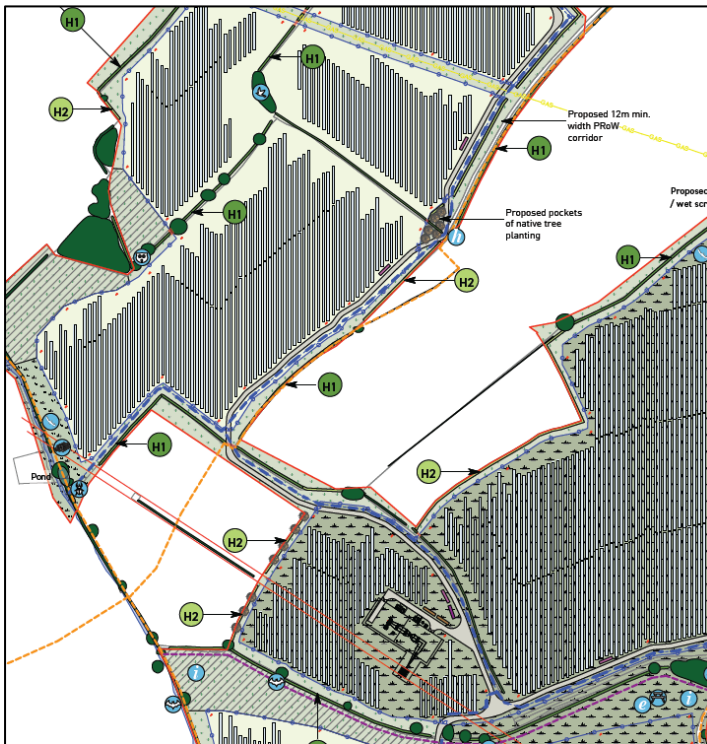


Refused Scheme – Some filtered views of solar equipment within enclosures would be visible from surrounding PRoWs.



Amendment 1 – To further reinforce hedgerows, regular hedgerow trees have now been added in Fields 6–9 on the Amended Scheme Plan.

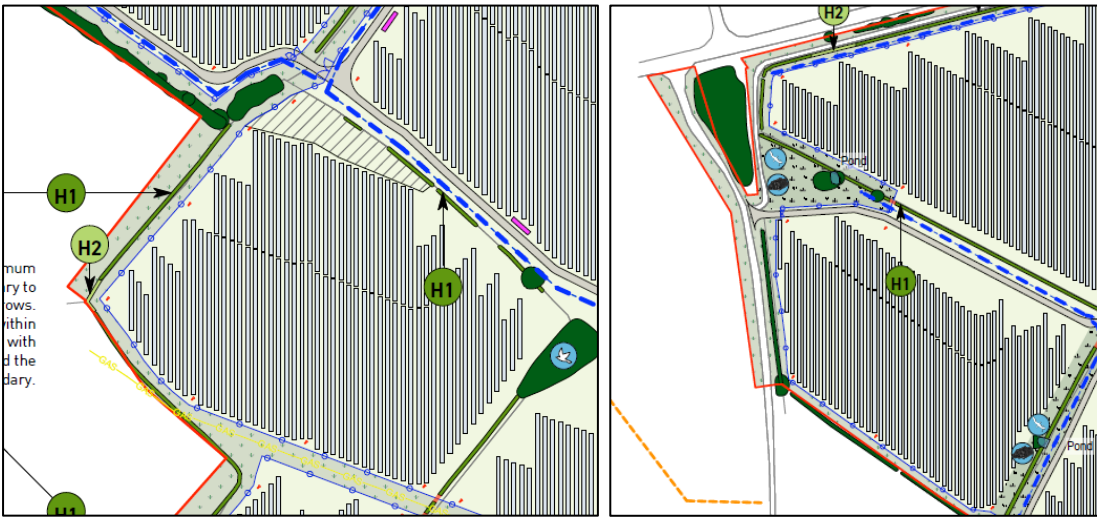
Amendment 2.



Refused Scheme – Some filtered views of solar equipment within enclosures would be visible from surrounding PRoWs.



Amendment 2 – To further reinforce hedgerows, hedgerow trees have now been added in Fields 2, 6 and 8-10 on the Amended Scheme Plan.

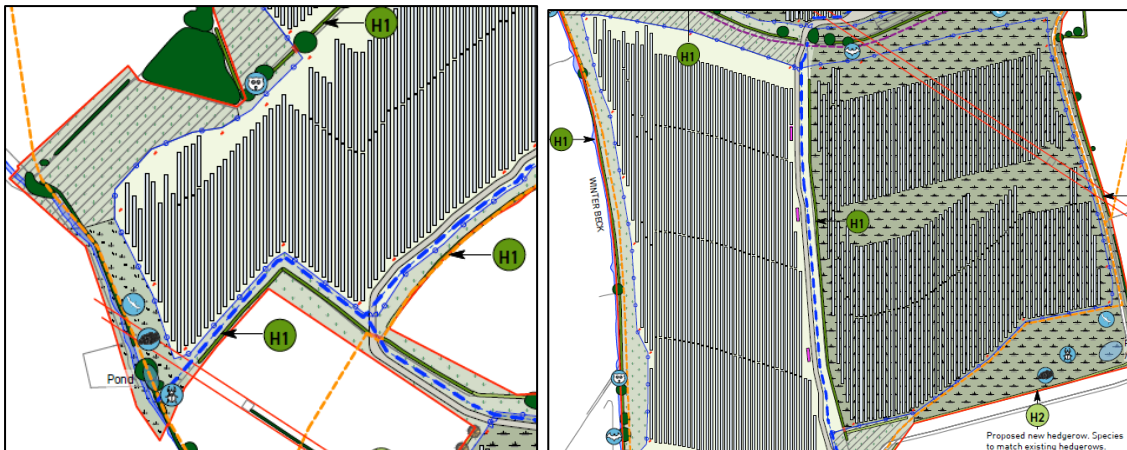


Refused Scheme – Some filtered views of solar equipment within enclosures would be visible from surrounding PRoWs.

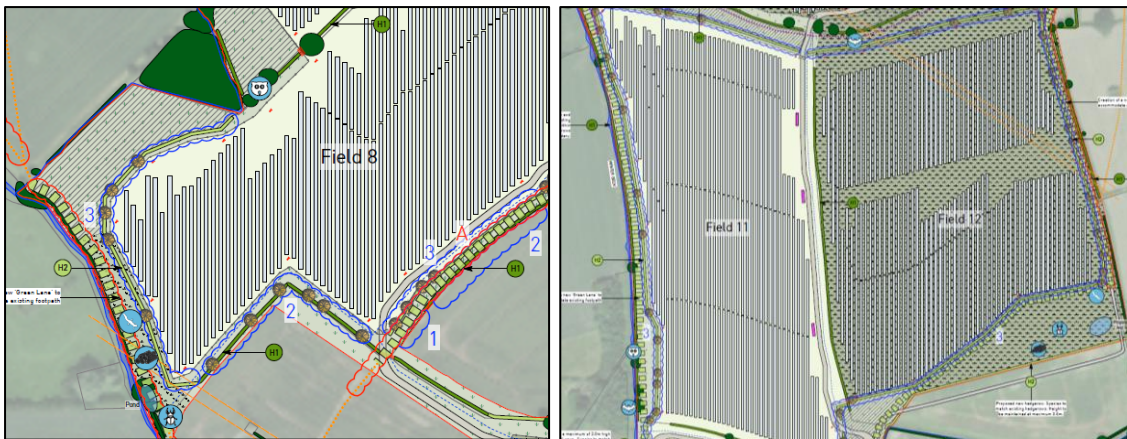


Amendment 2 – To further reinforce hedgerows, hedgerow trees have now been added in Fields 2, 6 and 8-10 on the Amended Scheme Plan.

Amendment 3.

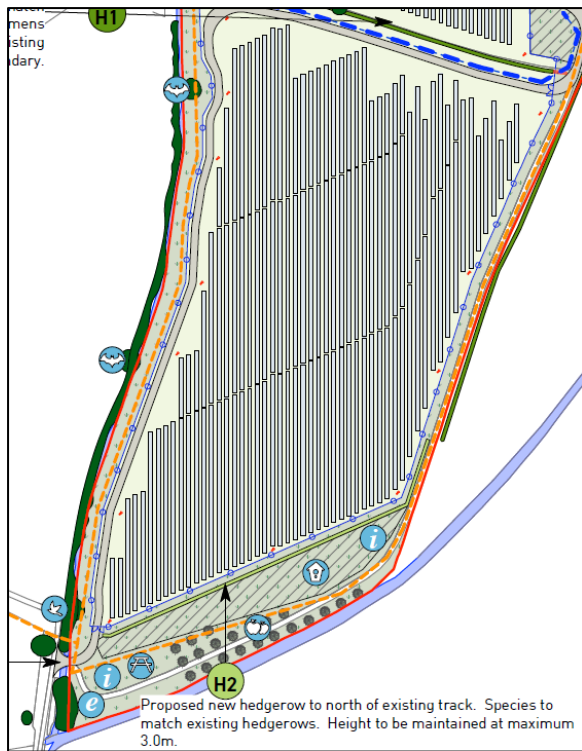


Refused Scheme – Views of the solar development (stock proof fence and equipment within enclosures) would be visible from some PRowWs.

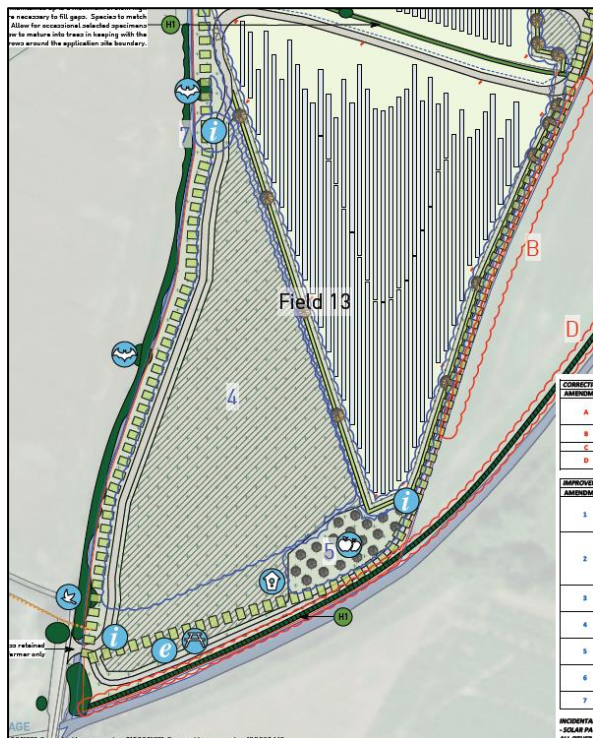


Amendment 3 – To reinforce hedgerows, hedgerows with regular hedgerow trees have now been proposed on the Amended Scheme Plan along the fence lines in Fields 8, 11, 12 and 13.

Amendment 4.

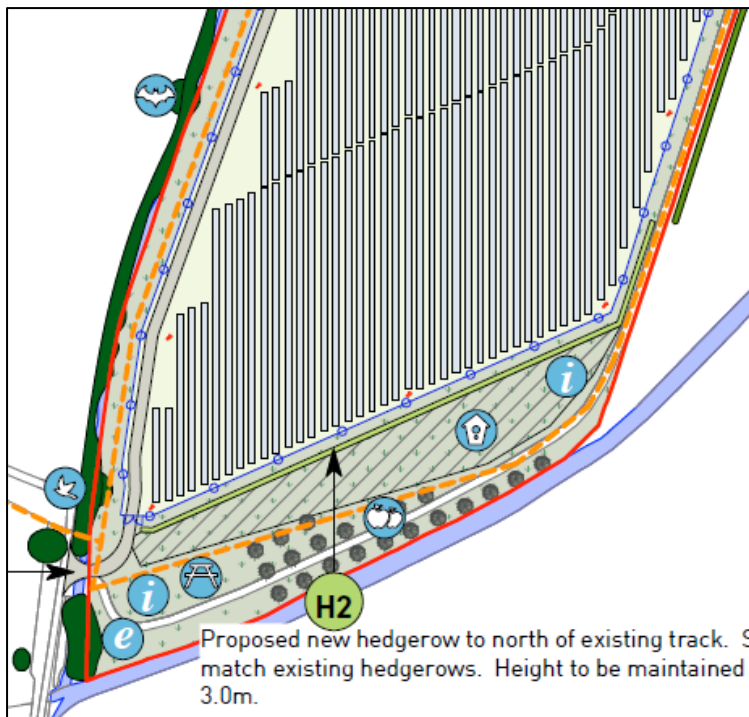


Refused Scheme – View from the PRoW towards Belvoir Castle were enclosed by the solar development.

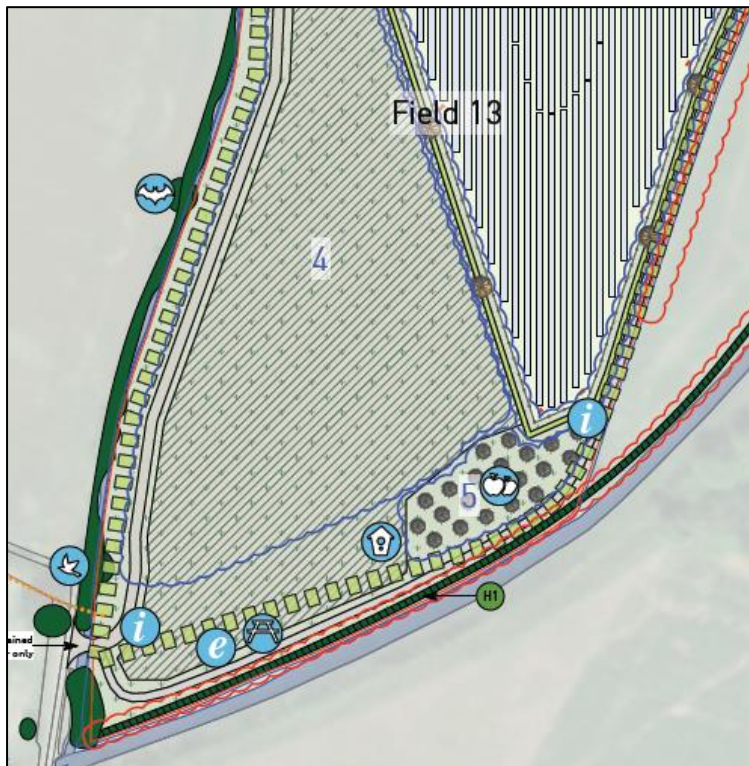


Amendment 4 – The extent of solar panels has been reduced (by just over 2.2 hectares) in Field 13 on the Amended Scheme Plan to retain the view towards Belvoir Castle and to provide an extended area which will be suitable as a Skylark nesting area.

Amendment 5.

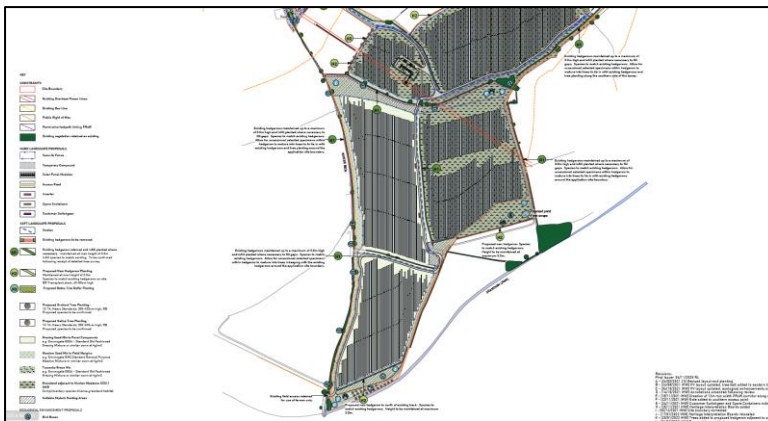
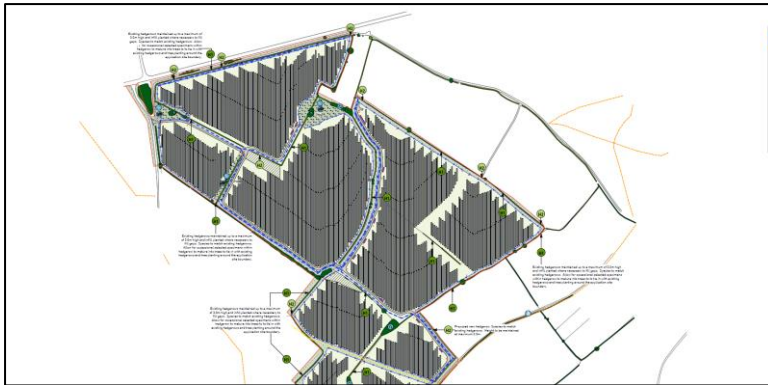


Refused Scheme – Proposed orchard tree planting would filter views from the PRoW to the north towards Belvoir Castle.

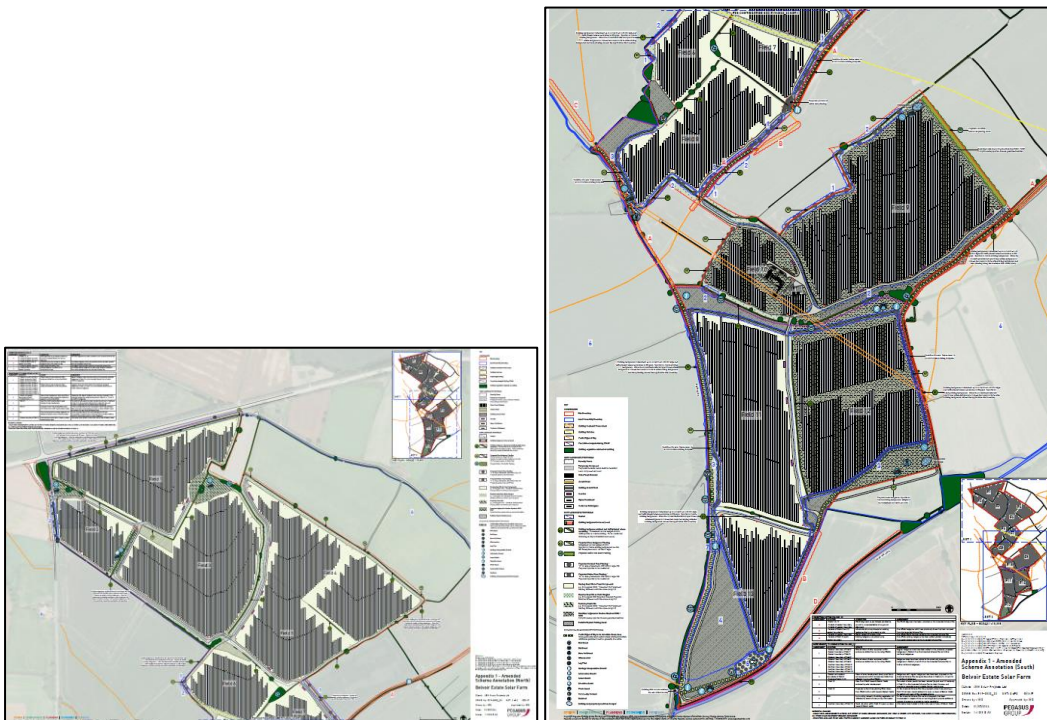


Amendment 5 – On the Amended Scheme Plan the proposed orchard tree planting in Field 13 has now been moved eastward to open up views of Belvoir Castle for walkers and users of the recreational area.

Amendment 6.

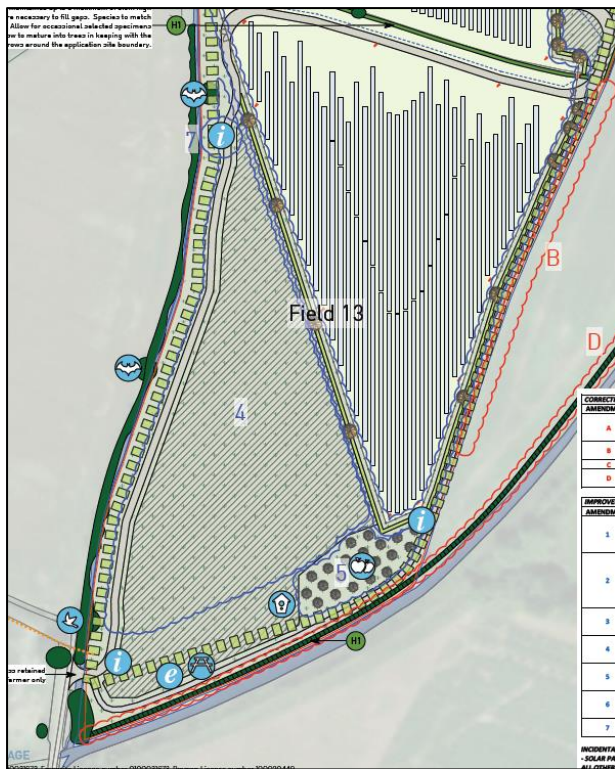


Refused Scheme – The surrounding network of existing vegetation was not shown.



Amendment 6 – To provide additional context of the screening provided by nearby vegetation, this is now shown on the Amended Scheme Plan.

Amendment 7.



Amendment 7 – An Information board has now been added to inform users of the PRoW of the view towards Belvoir Castle.